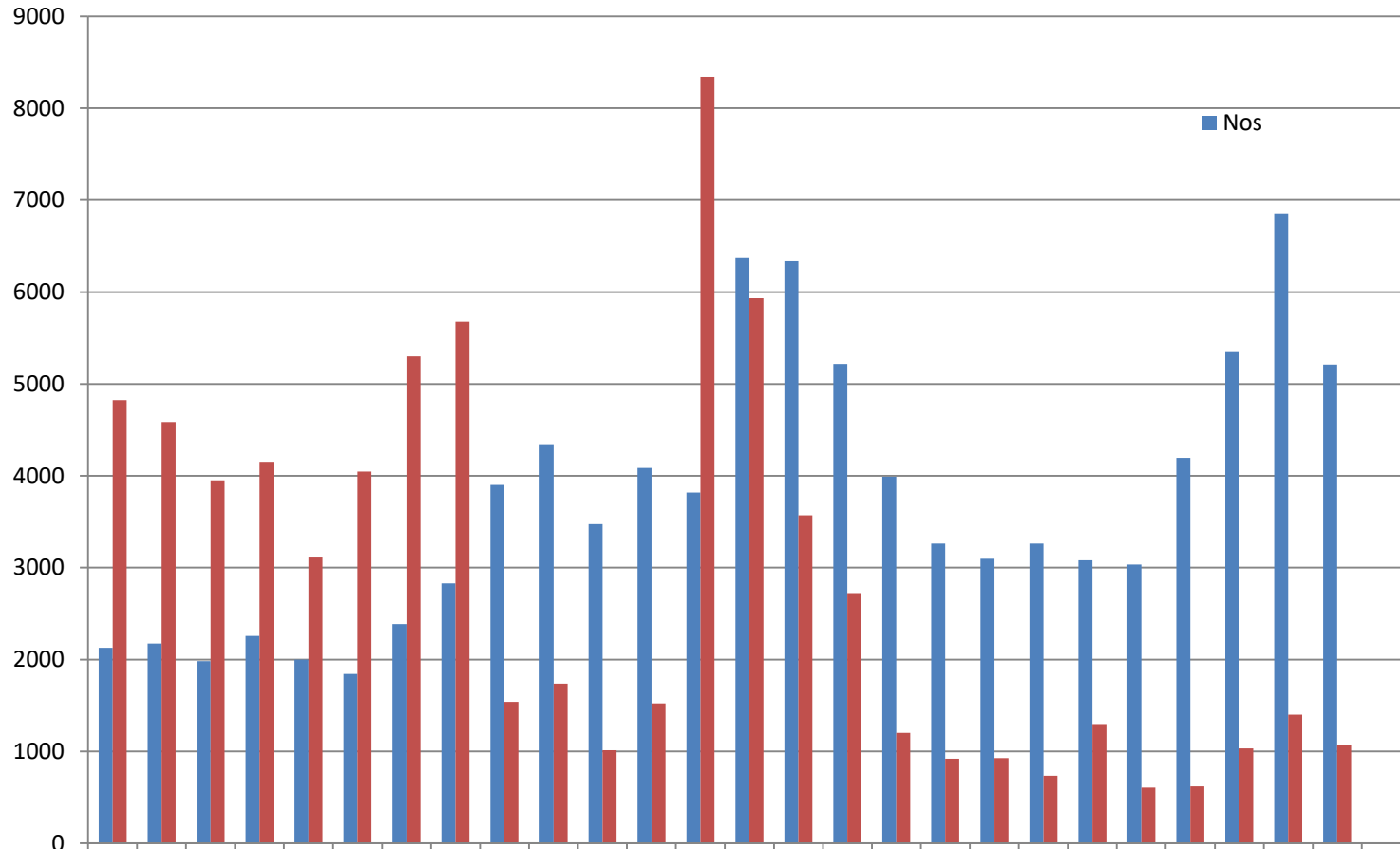
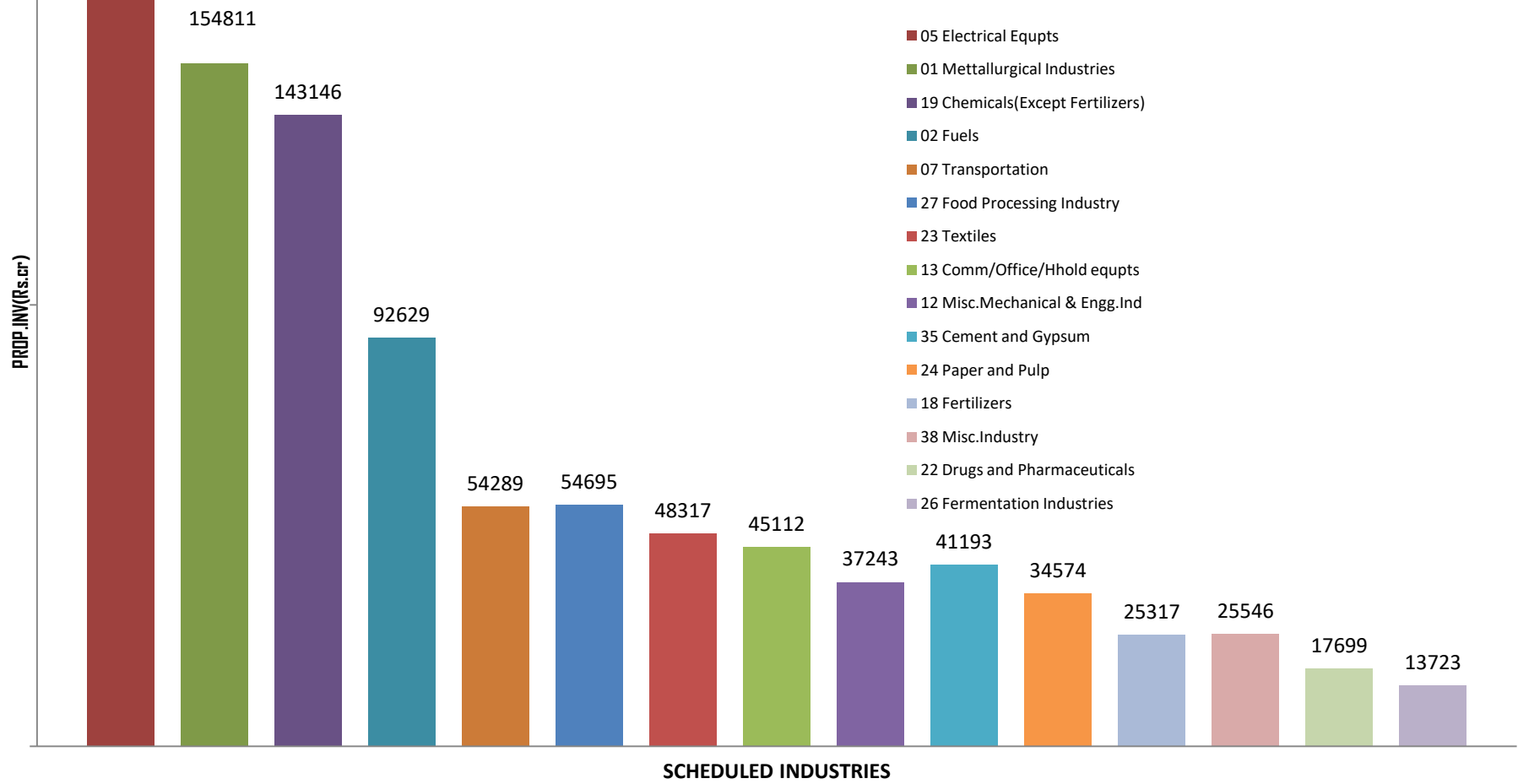


## YEARWISE INVESTMENT INTENTIONS UPTO November 2019

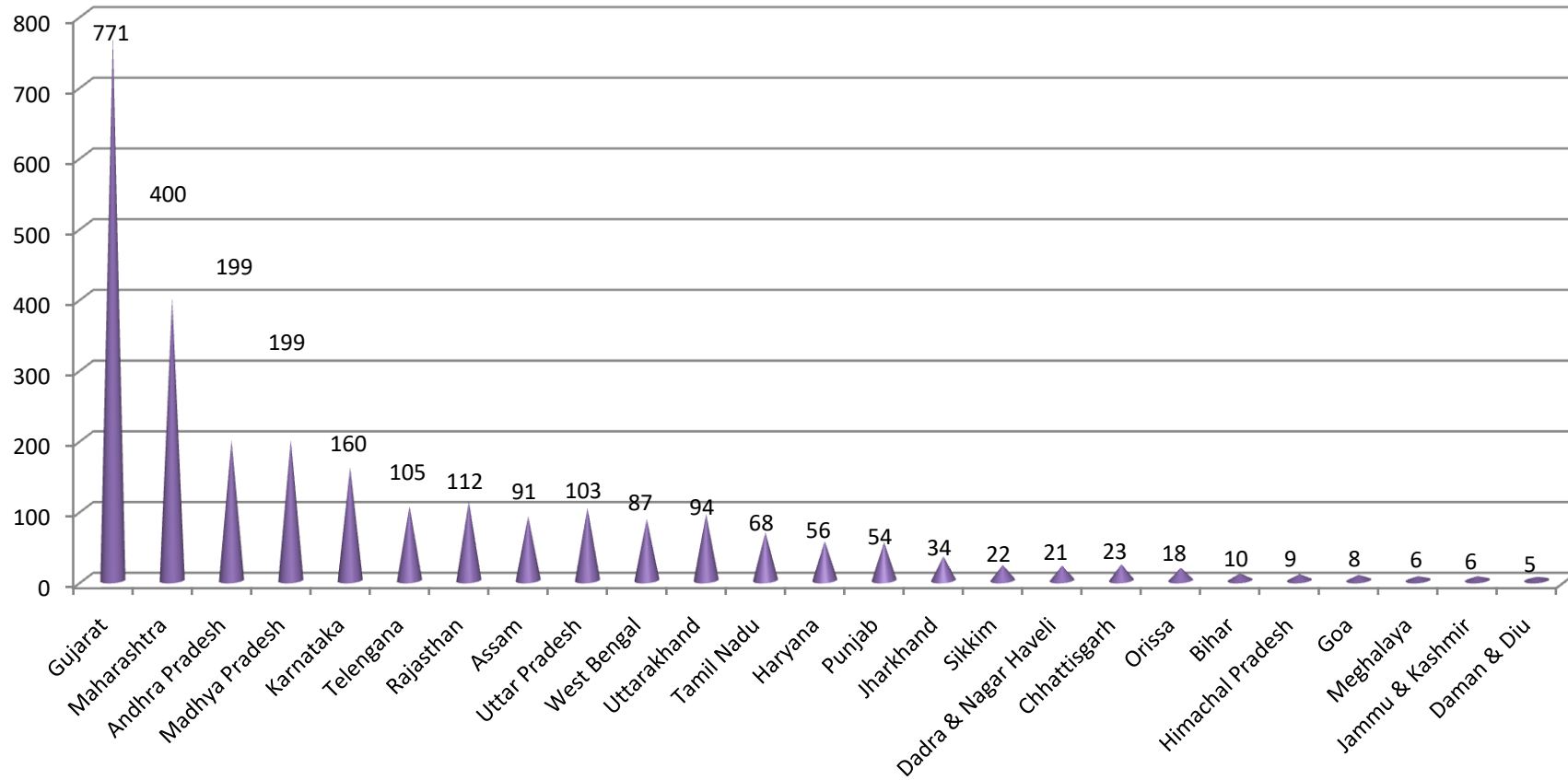


	2019	18	17	16	15	14	13	12	11	10	9	8	7	6	5	4	3	2	1	2000	99	98	97	95	94	93	
Nos	212	217	198	225	199	184	238	282	390	433	347	408	381	637	633	521	399	326	309	326	308	303	419	534	685	521	
Prop Inv (Rs.100 Crs)	482	458	395	414	311	404	530	567	153	173	101	152	834	593	356	272	120	919	926	734	129	607	619	103	139	106	

## PROPOSED INVESTMENT (SCHEDULED INDUSTRYWISE) Since January 2017 to November 2019



**STATEWISE IEMs IMPLEMENTED FROM JANUARY 2017 TO November 2019  
(ON THE BASIS OF PART B FILED FOR IEMs FILED SINCE 1991)**



## Statewise Investment intentions from January 2017 to November 2019

