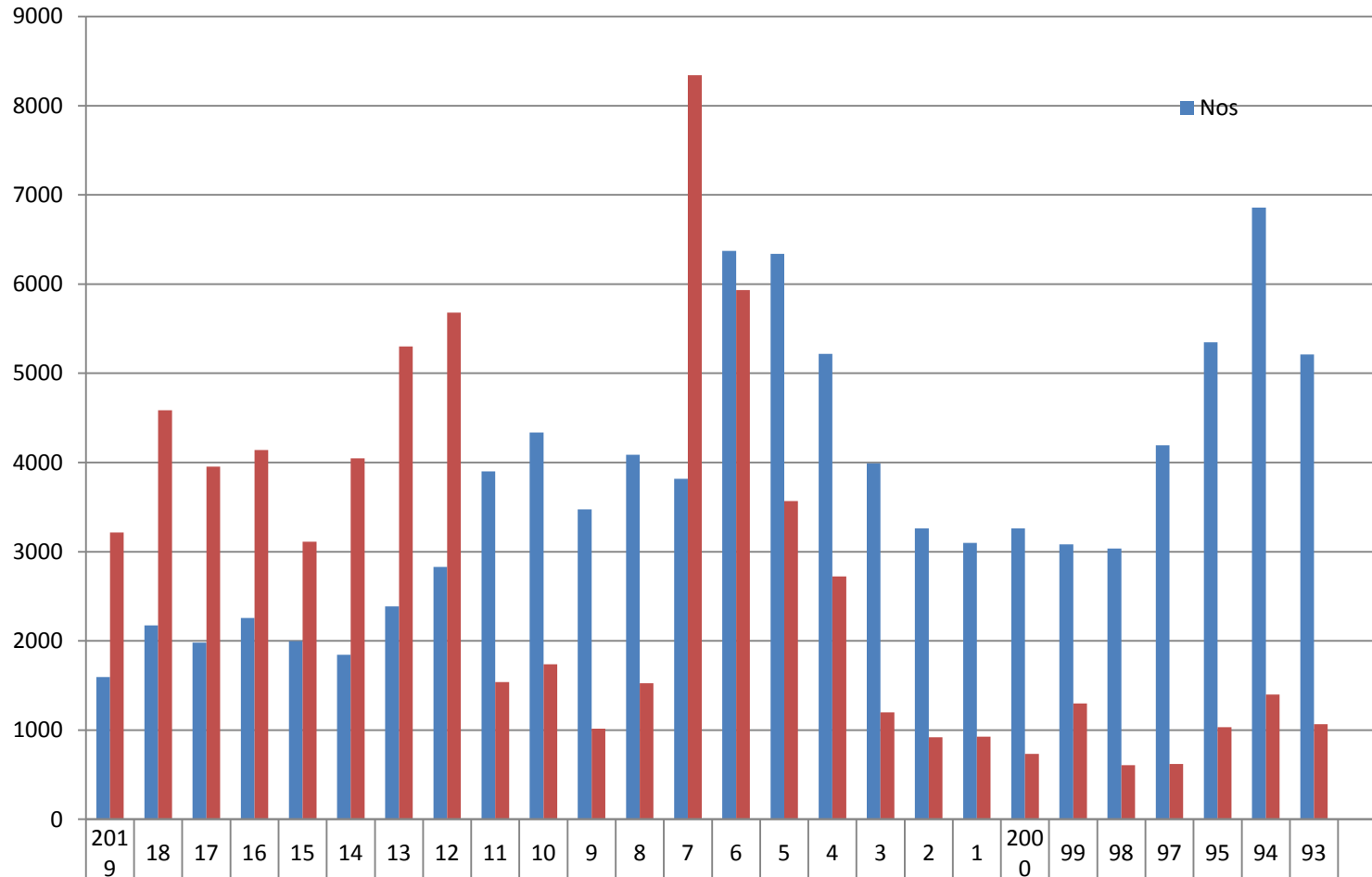
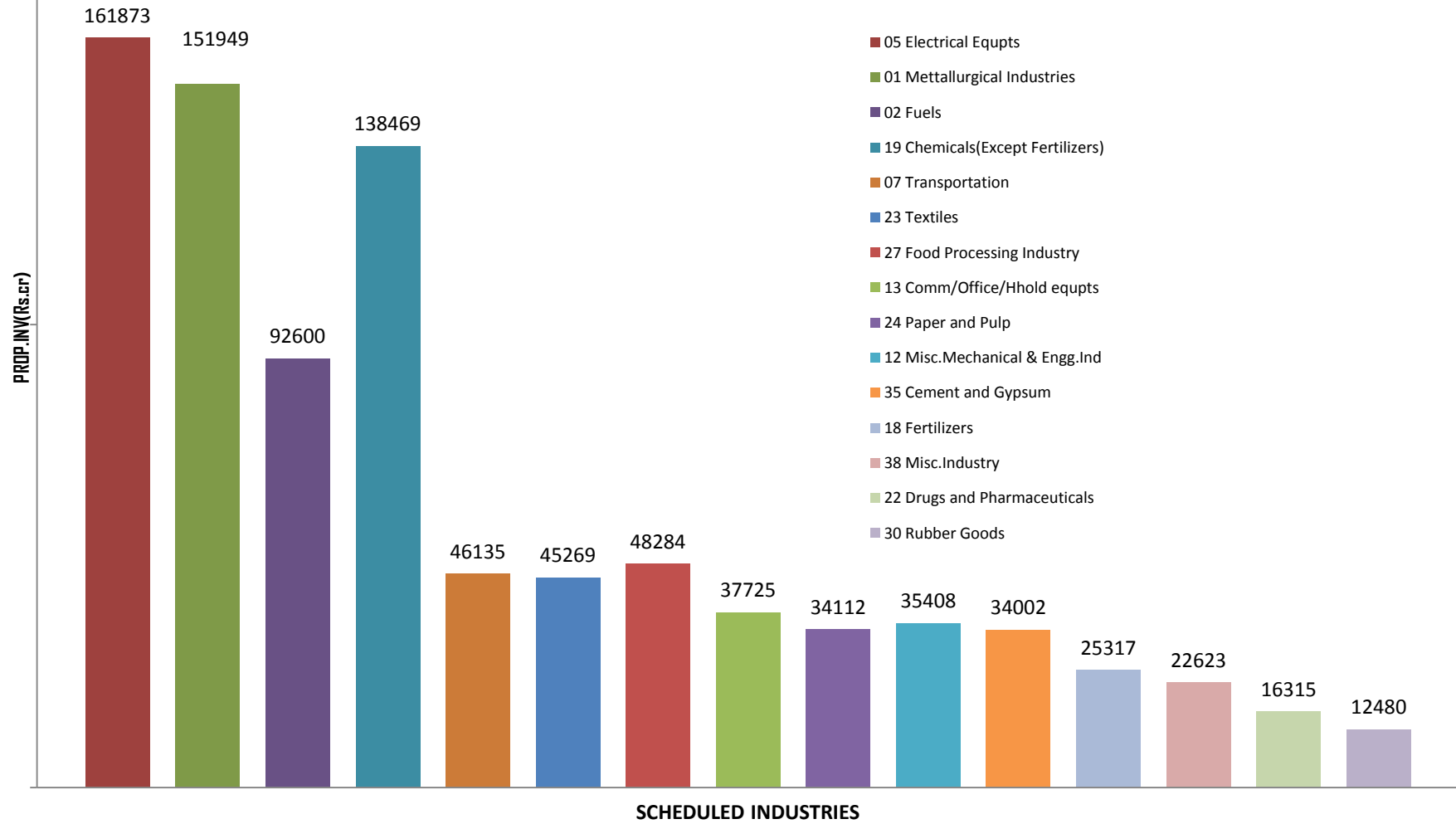


## YEARWISE INVESTMENT INTENTIONS UPTO August 2019

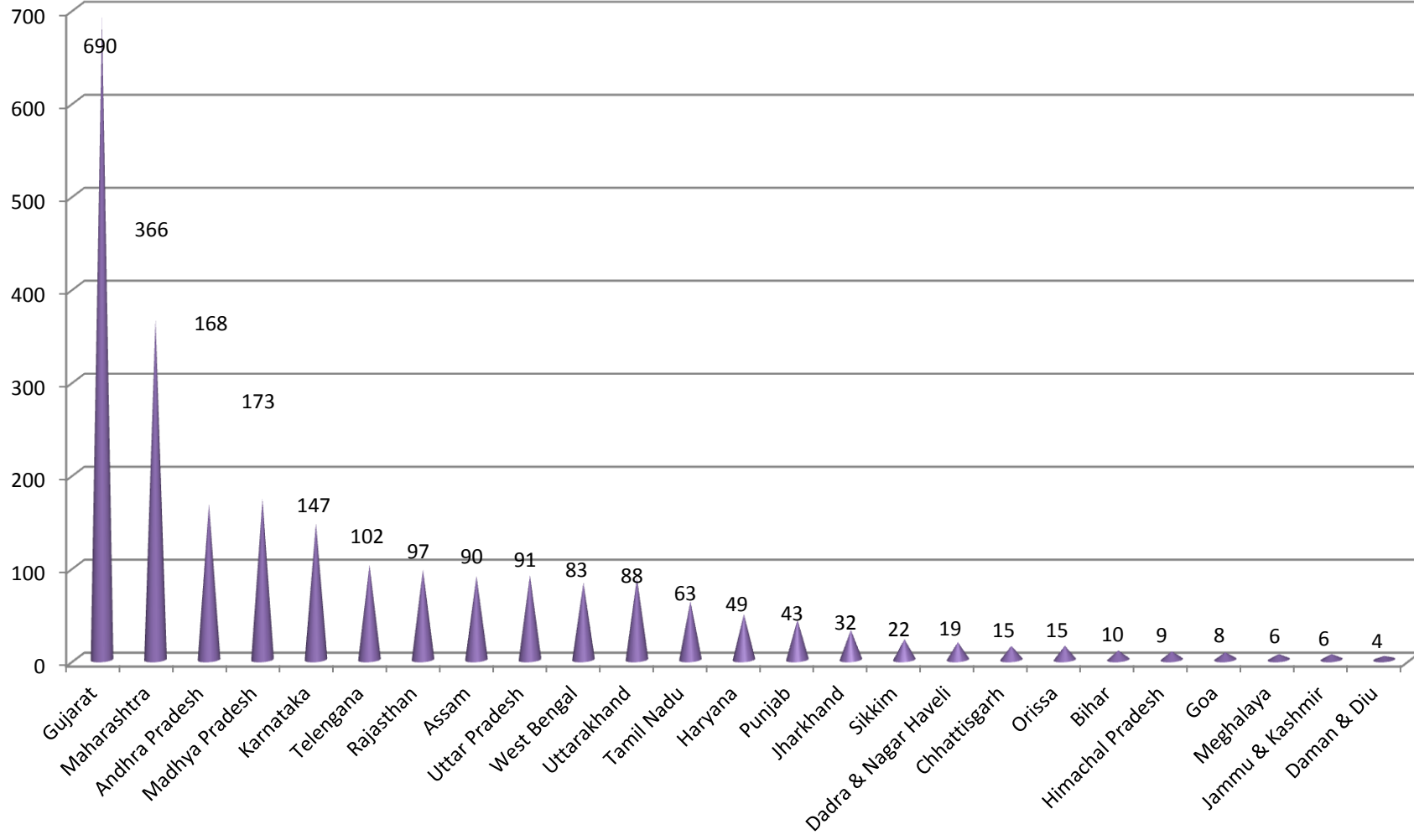


Nos	1595	2173	1982	2256	1998	1843	2387	2828	3900	4336	3475	4085	3818	6371	6338	5218	3991	3261	3098	3261	3080	3034	4194	5347	6857	5210
Prop Inv ( Rs.100 Crs)	3215	4586	3952	4143	3110	4047	5301	5679	1539	1736	1014	1523	8342	5934	3569	2723	1200	919	926	734	1297	607	619	1032	1398	1067

## PROPOSED INVESTMENT (SCHEDULED INDUSTRYWISE) Since January 2017 to August 2019



### STATEWISE IEMs IMPLEMENTED FROM JANUARY 2017 TO August 2019 (ON THE BASIS OF PART B FILED FOR IEMs FILED SINCE 1991)



## Statewise Investment Mentions from January 2017 to August 2019

