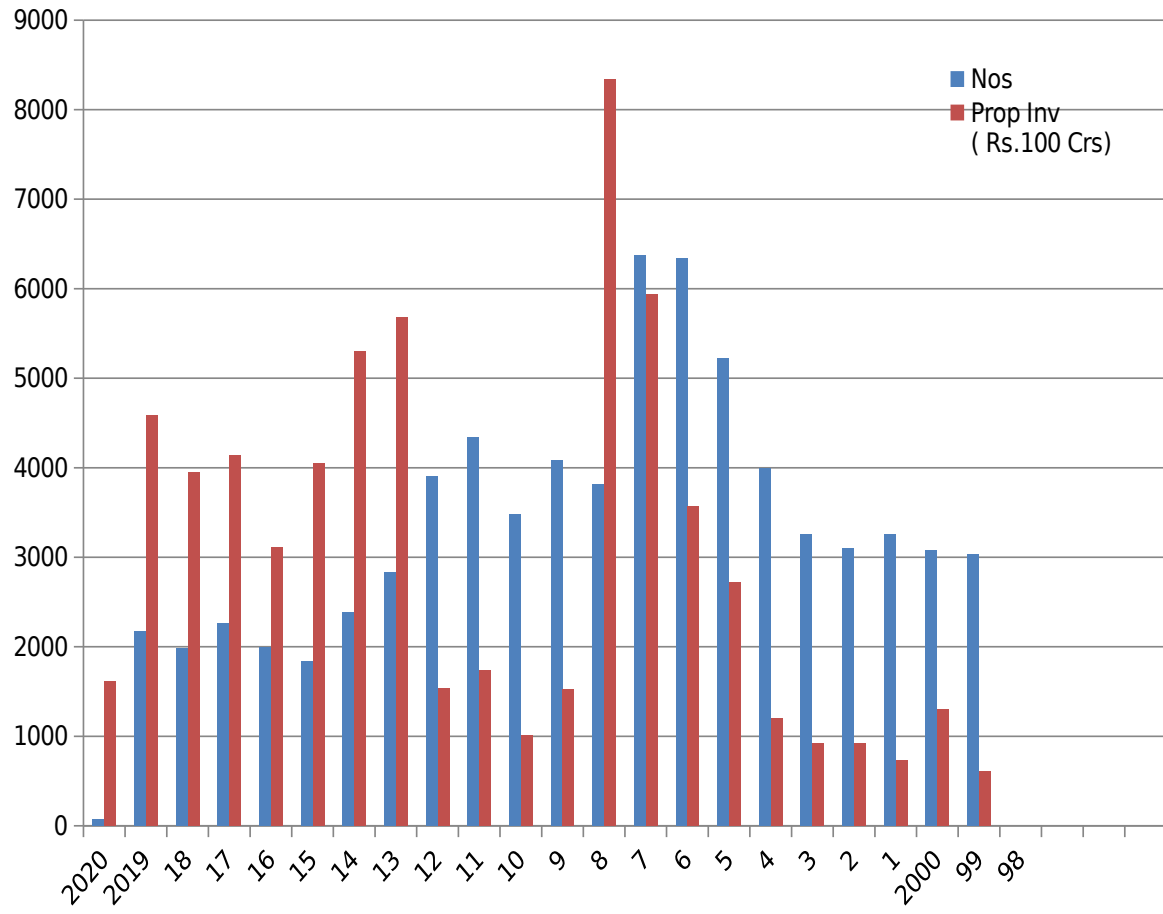
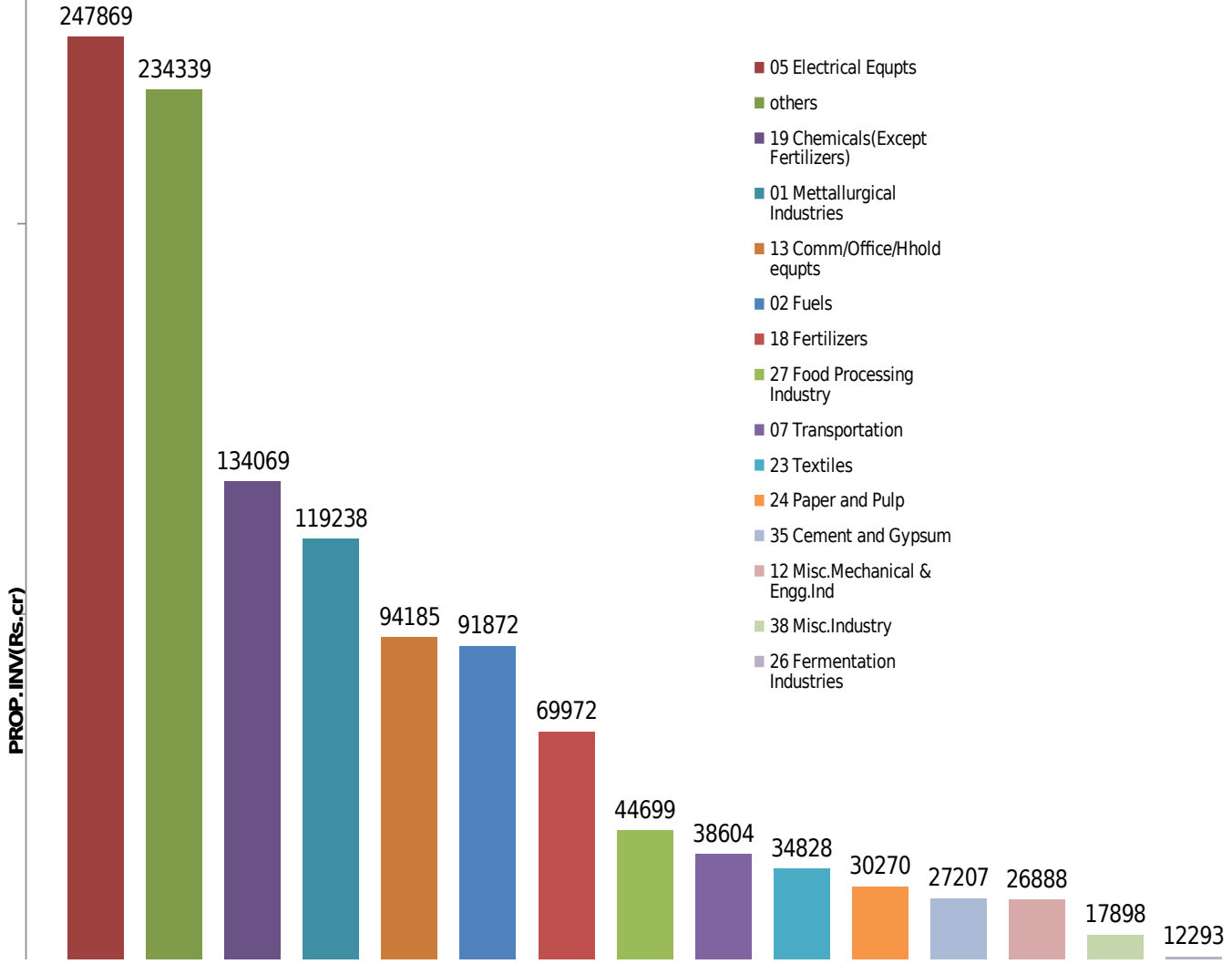


YEARWISE INVESTMENT INTENTIONS UPTO

MaY 2020



PROPOSED INVESTMENT (SCHEDULED INDUSTRY) Since January 2018 to MAY 2020



STATEWISE IEMs IMPLEMENTED FROM JANUARY 2018 TO MAY 2020 (ON THE BASIS OF PART B FILED FOR IEMs FILED SINCE 1991)

