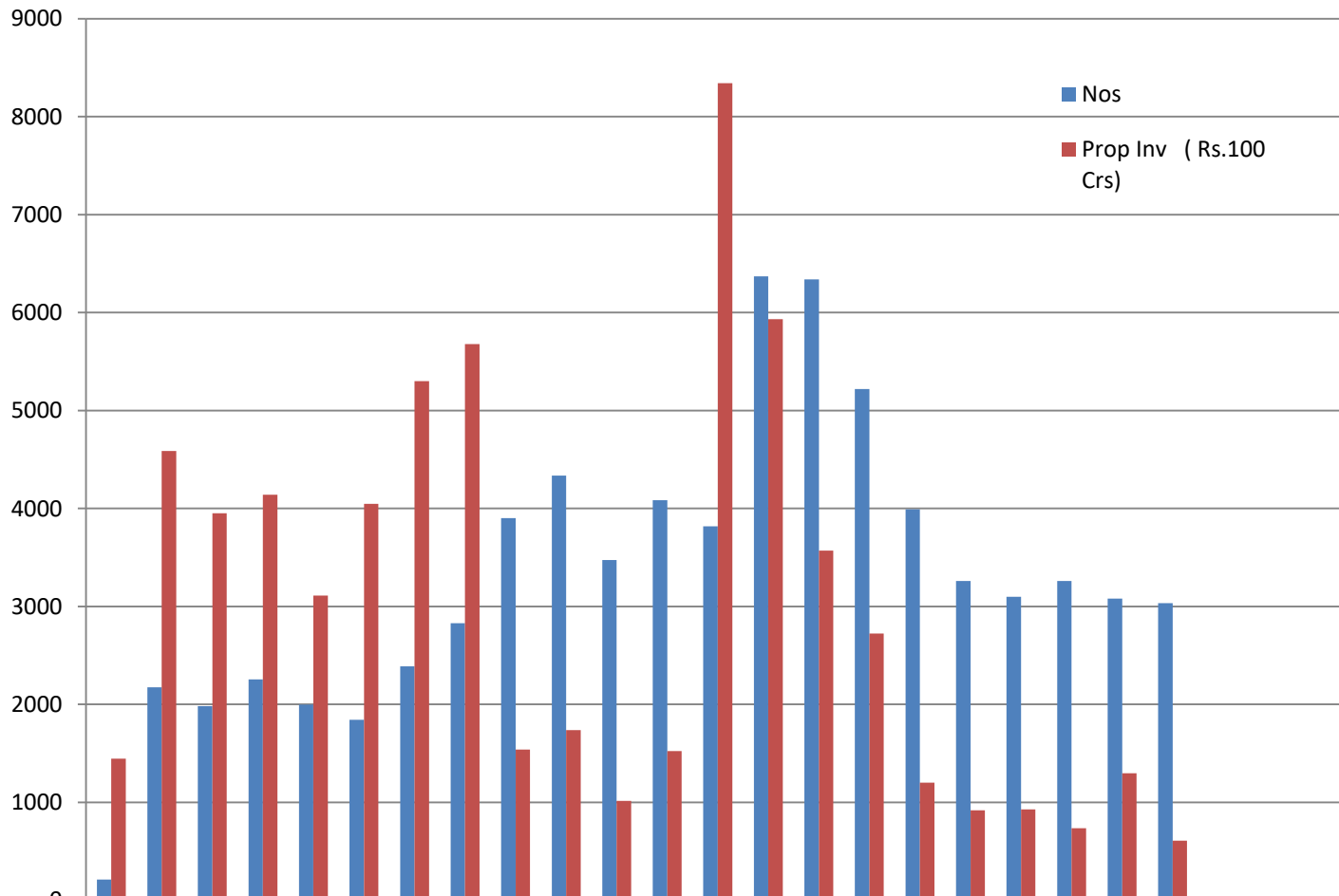
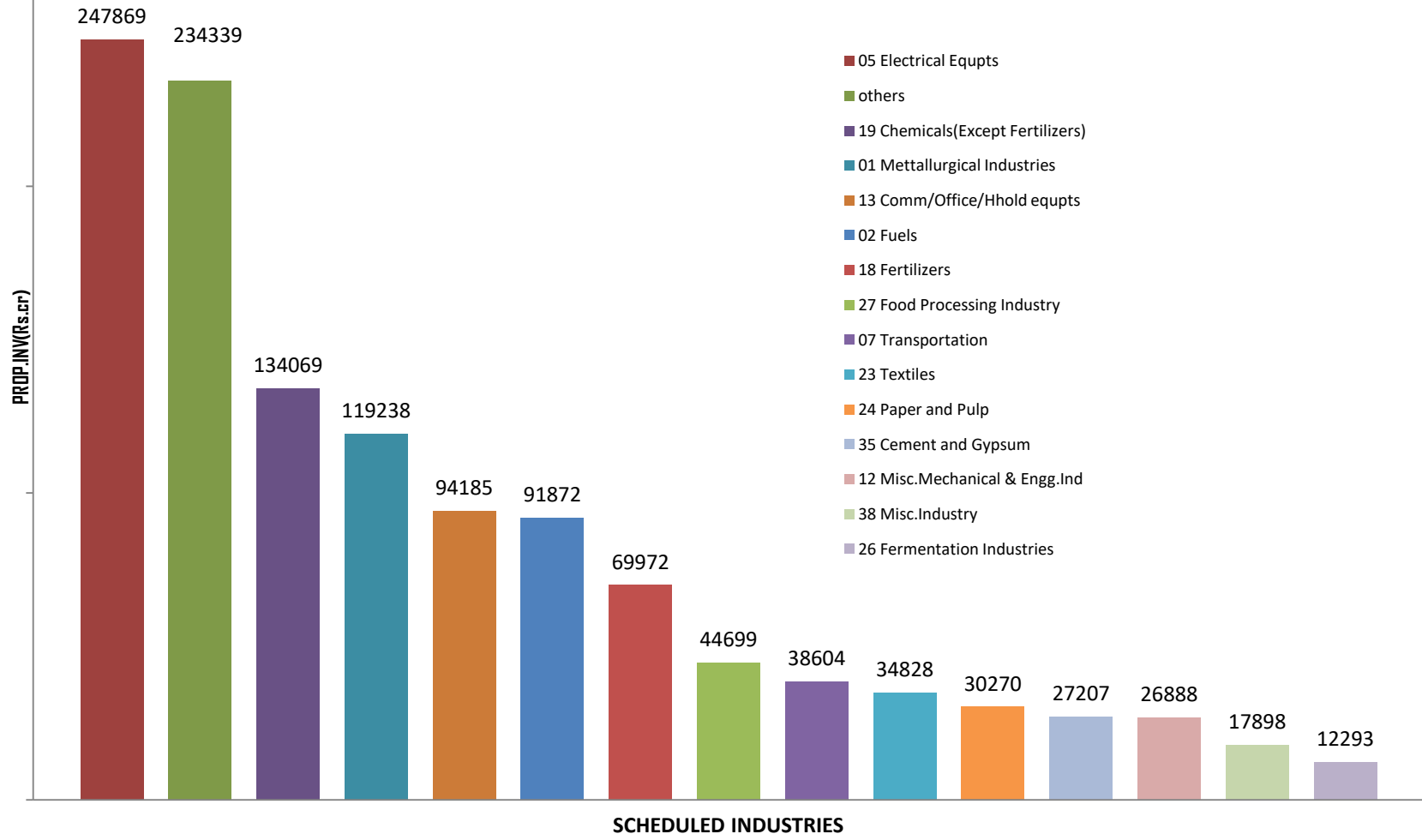


YEARWISE INVESTMENT INTENTIONS UPTO January 2020



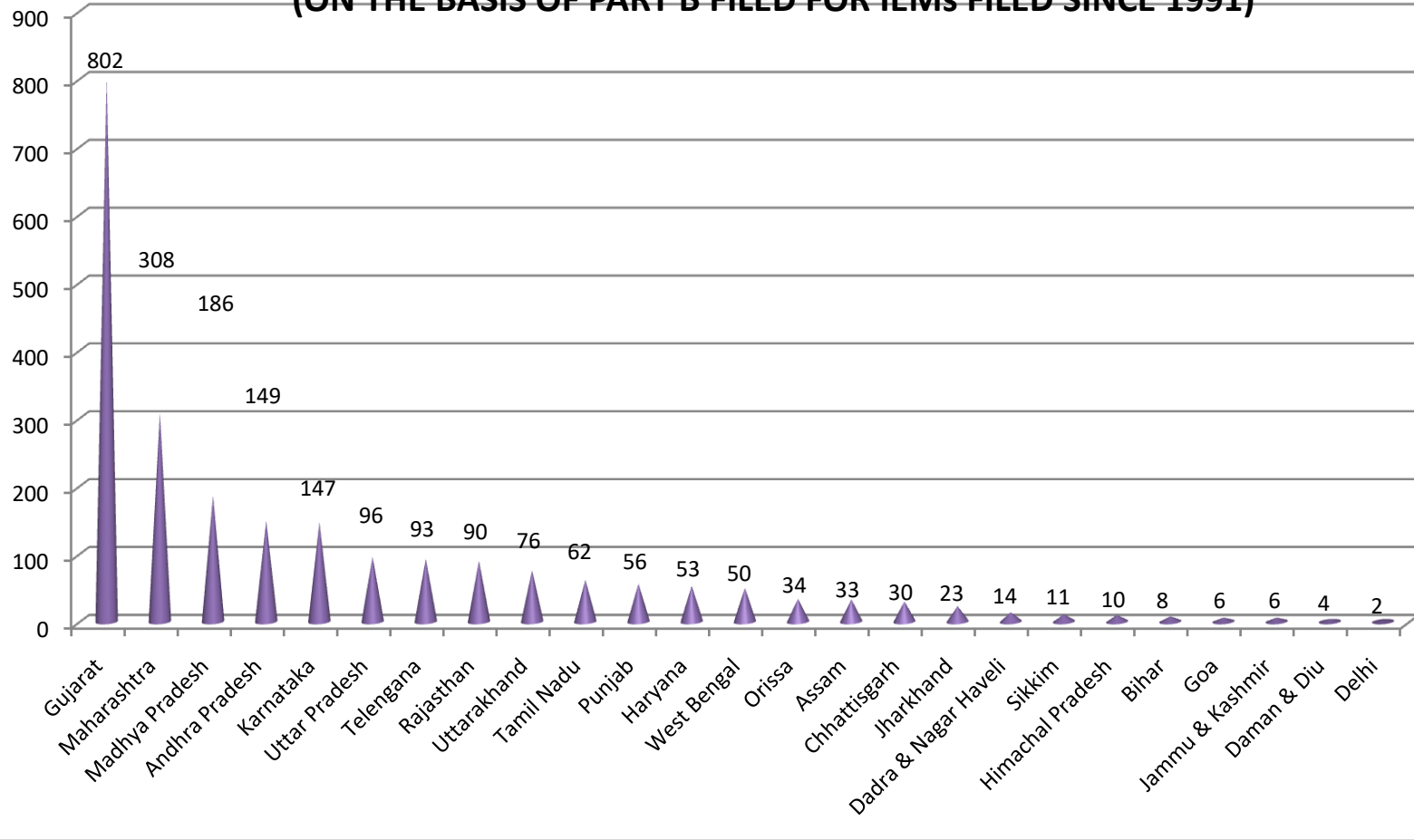
Nos	210	217	198	225	199	184	238	282	390	433	347	408	381	637	633	521	399	326	309	326	308	303			
Prop Inv (Rs.100 Crs)	144	458	395	414	311	404	530	567	153	173	101	152	834	593	356	272	120	919	926	734	129	607			

PROPOSED INVESTMENT (SCHEDULED INDUSTRY) Since January 2018 to January 2020



STATEWISE IEMs IMPLEMENTED FROM JANUARY 2017 TO January 2020

(ON THE BASIS OF PART B FILED FOR IEMs FILED SINCE 1991)



Statewise Investment intentions from January 2018 to January 2020

