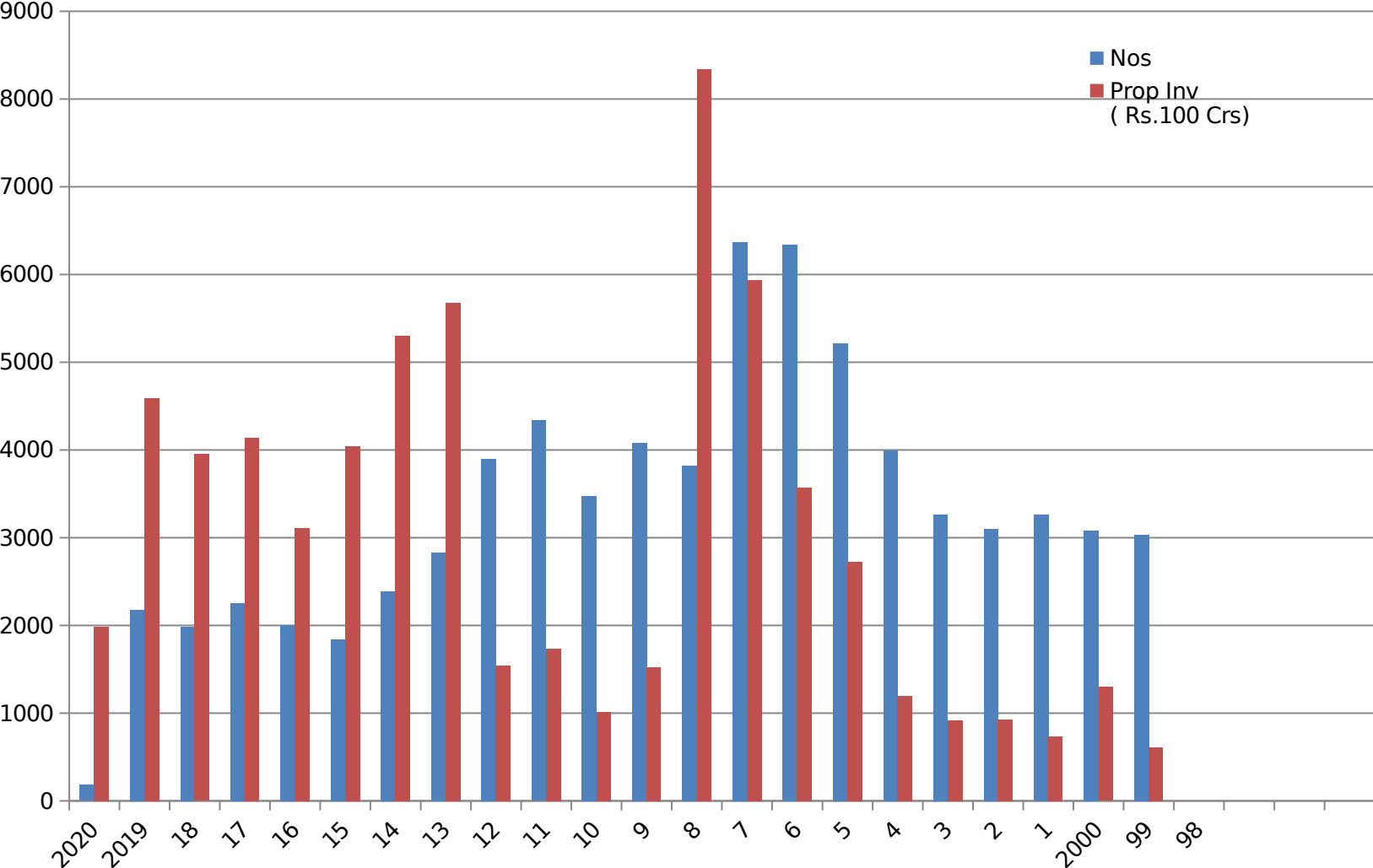
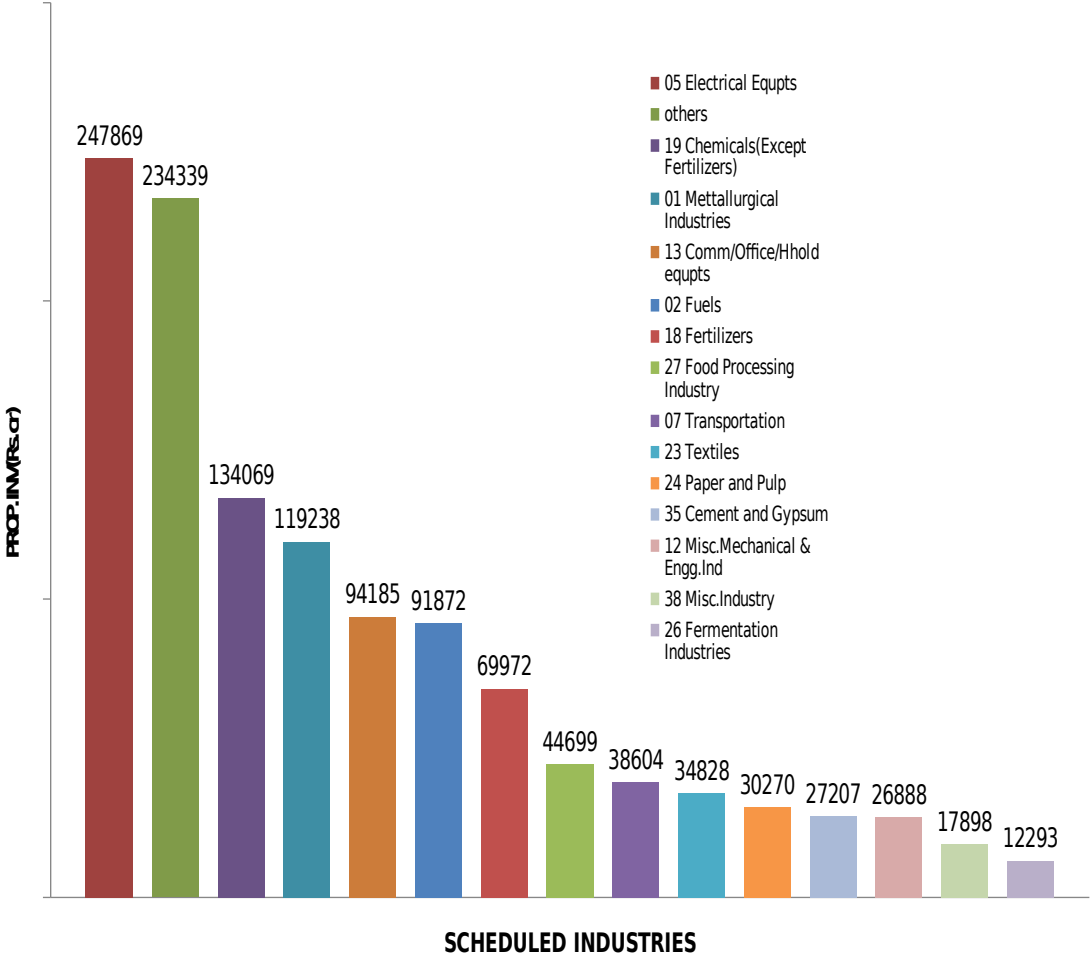


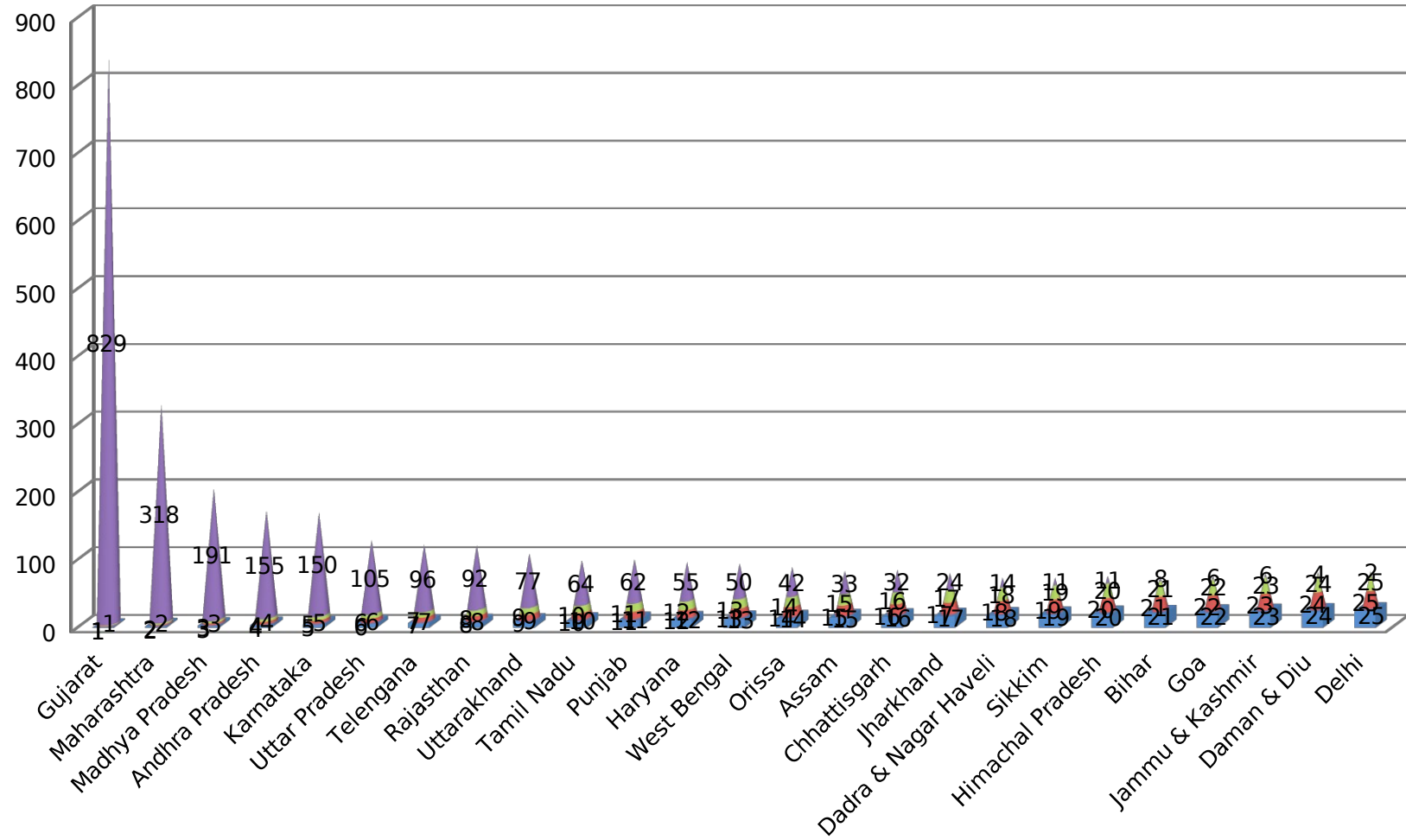
# YEARWISE INVESTMENT INTENTIONS UPTO February 2020



# PROPOSED INVESTMENT (SCHEDULED INDUSTRY) Since January 2018 to February 2020



# STATEWISE IEMs IMPLEMENTED FROM JANUARY 2017 TO February 2020 (ON THE BASIS OF PART B FILED FOR IEMs FILED SINCE 1991)





# Statewise Investment intentions from January 2018 to February 2020

Jharkhand; 0.17% Punjab; 0.27% Telengana; 0.73% Tamil Nadu; 1.17% West Bengal; 0.72% Bihar; 0.09% Chhattisgarh; 1.07%

