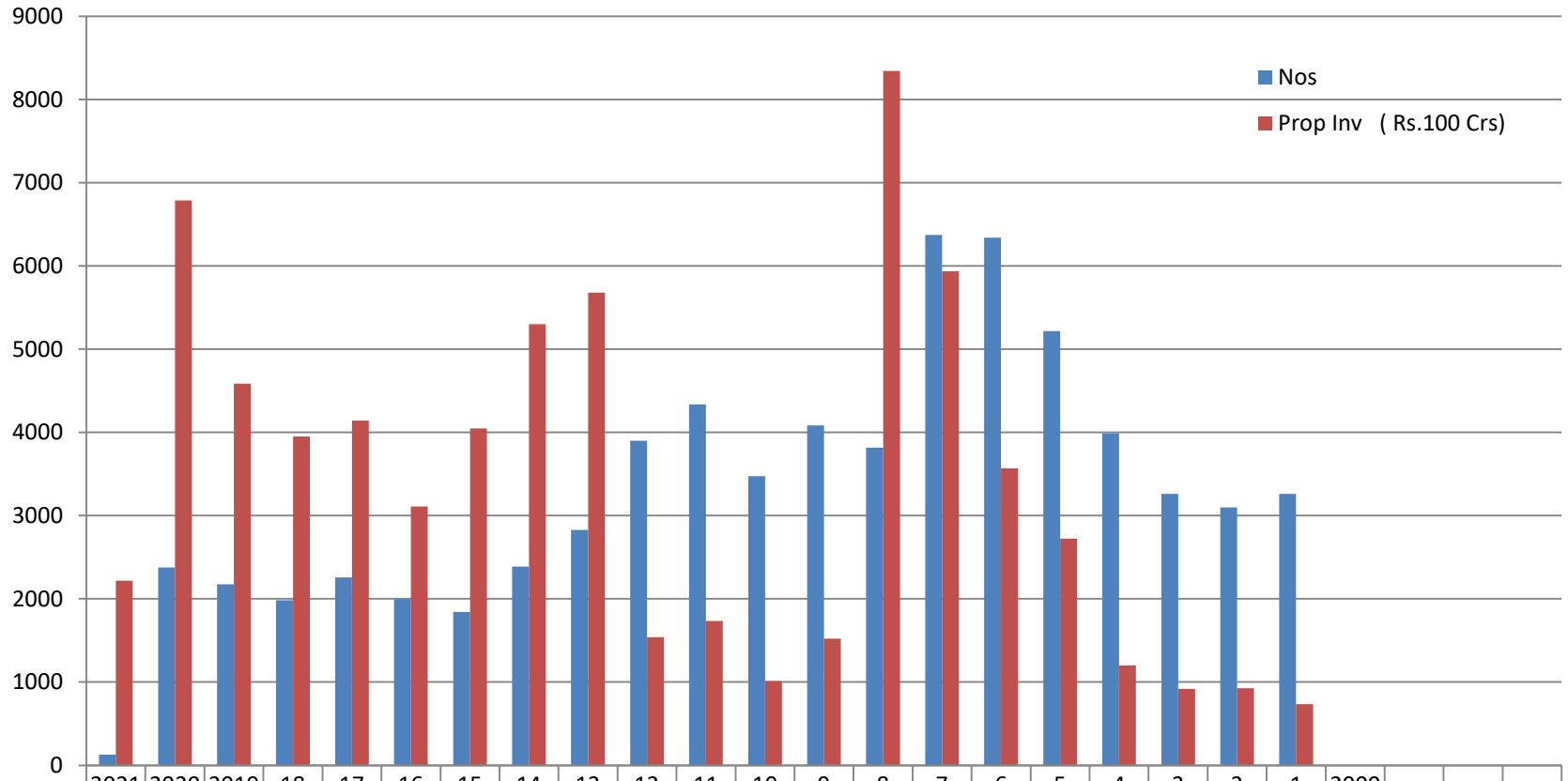
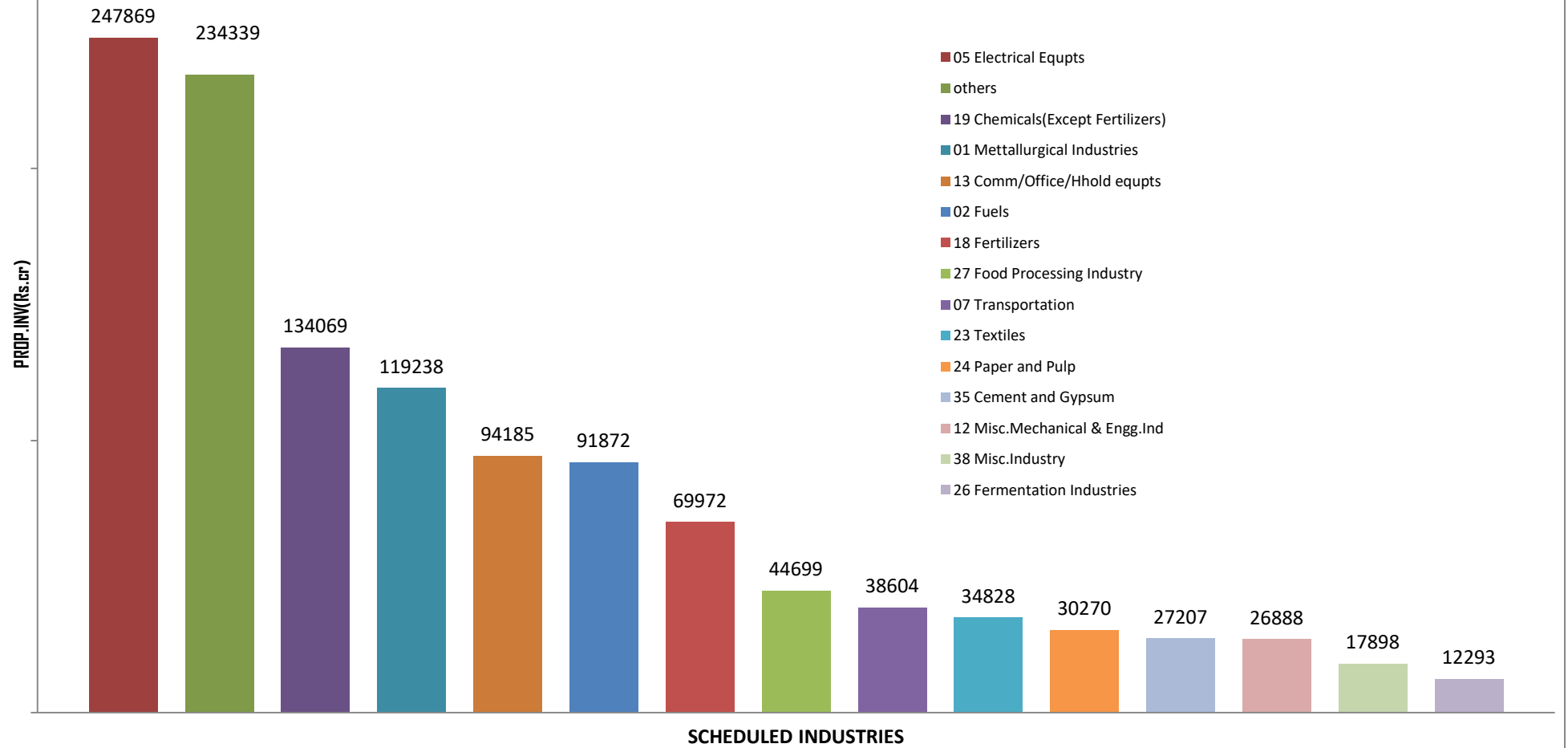


## YEARWISE INVESTMENT INTENTIONS UPTO January 2021



	2021	2020	2019	18	17	16	15	14	13	12	11	10	9	8	7	6	5	4	3	2	1	2000			
Nos	127	2378	2173	1982	2256	1998	1843	2387	2828	3900	4336	3475	4085	3818	6371	6338	5218	3991	3261	3098	3261				
Prop Inv (Rs.100 Crs)	2217	6788	4586	3952	4141	3110	4047	5301	5679	1539	1736	1014	1523	8342	5934	3569	2723	1200	919	926	734				

## PROPOSED INVESTMENT (SCHEDULED INDUSTRY) Since January 2018 to January 2021



## STATEWISE IEMs IMPLEMENTED FROM JANUARY 2018 TO January 2021 (ON THE BASIS OF PART B FILED FOR IEMs FILED SINCE 1991)

