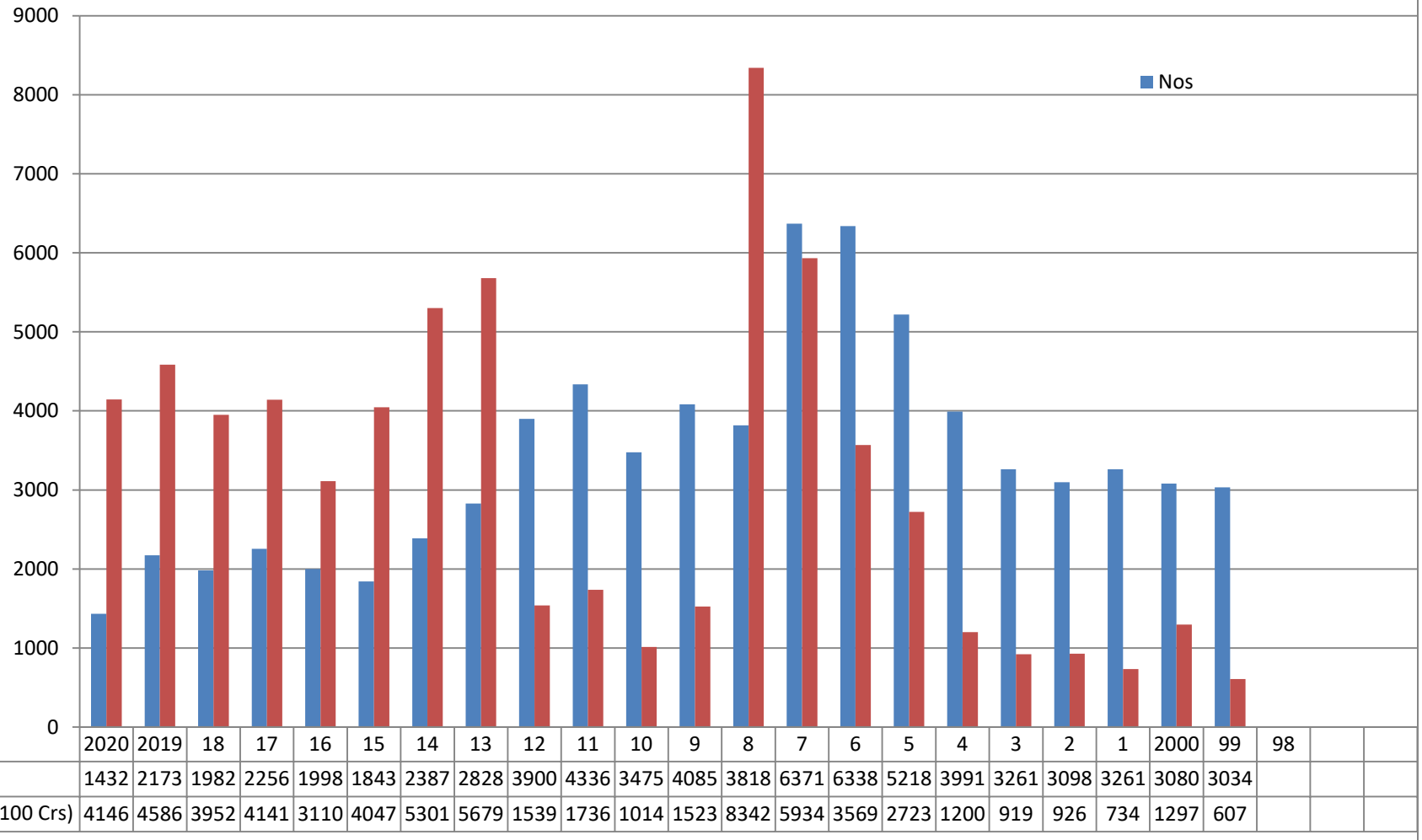
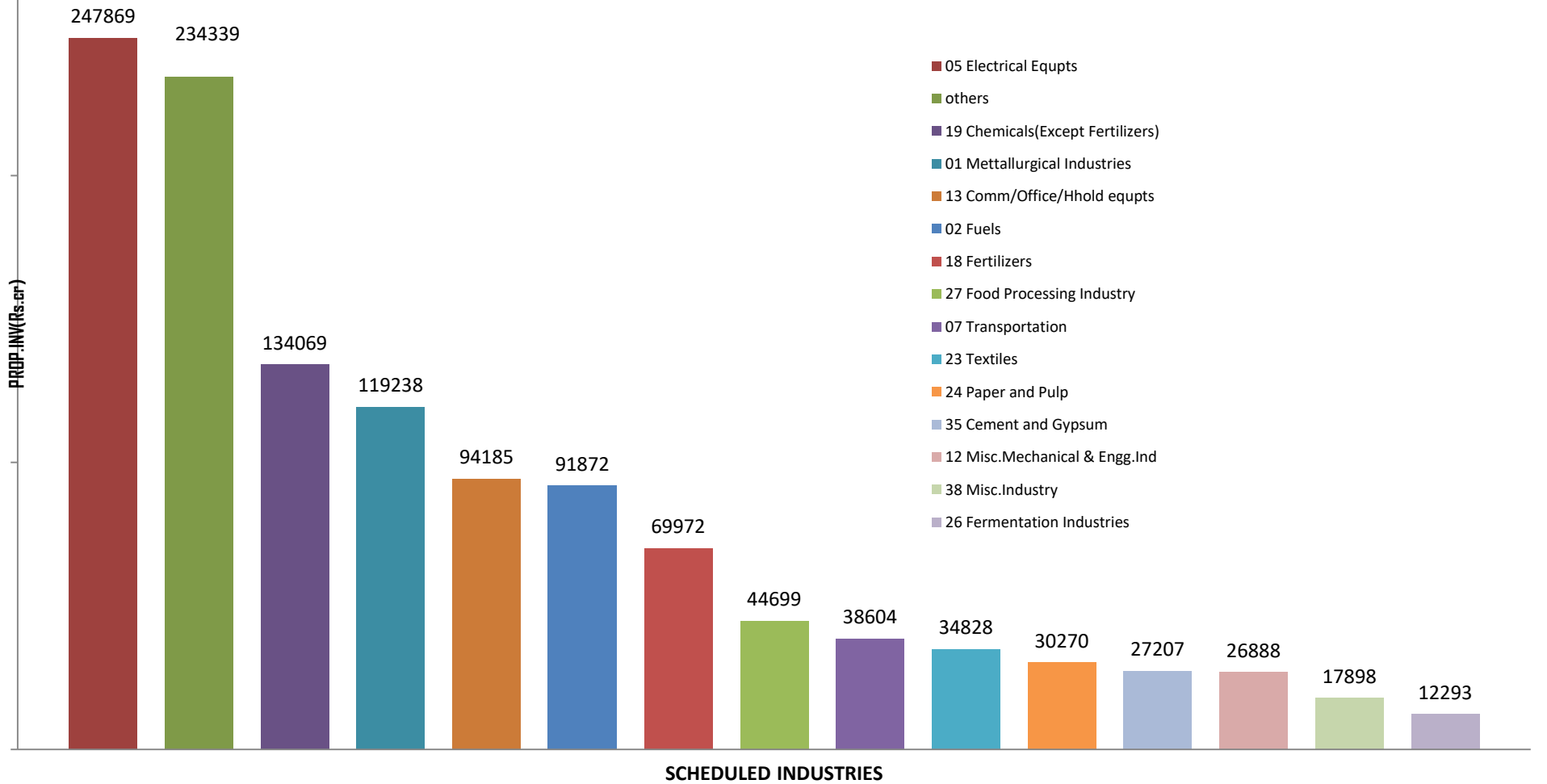


## YEARWISE INVESTMENT INTENTIONS UPTO December 2020



## PROPOSED INVESTMENT (SCHEDULED INDUSTRY) Since January 2018 to December 2020



**STATEWISE IEMs IMPLEMENTED FROM JANUARY 2018 TO December2020  
(ON THE BASIS OF PART B FILED FOR IEMs FILED SINCE 1991)**

